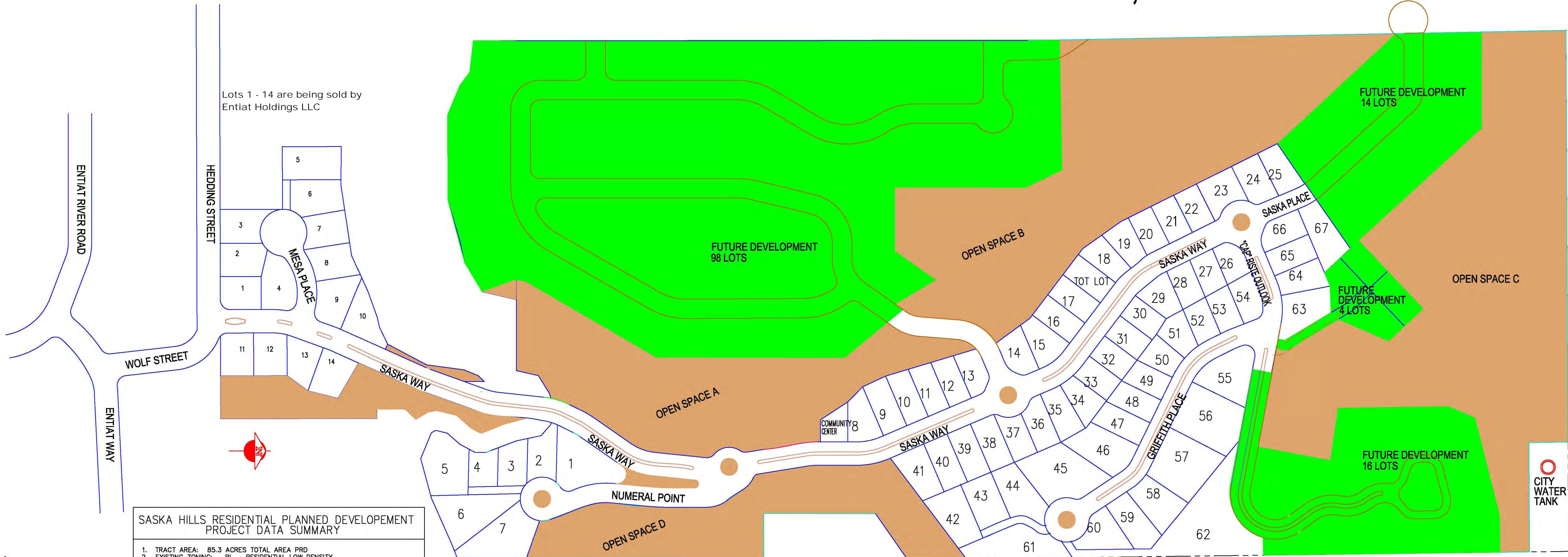
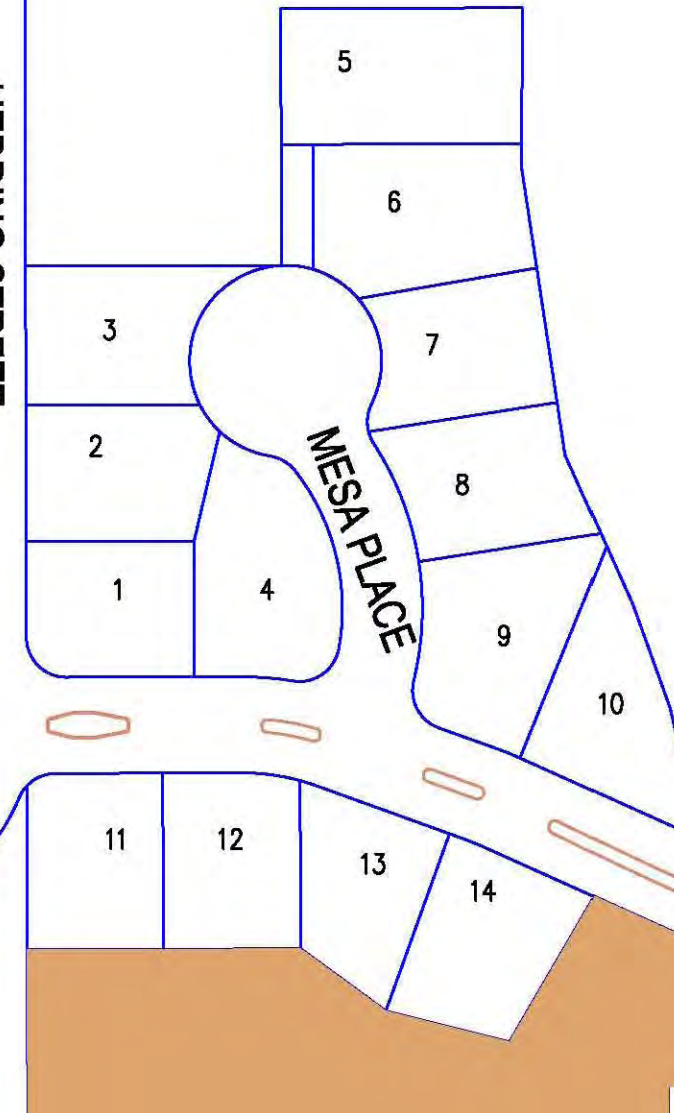


# SASKA HILLS RESIDENTIAL PLANNED DEVELOPMENT, ENTIAT WASHINGTON



Lots 1 - 14 are being sold by Entiat Holdings LLC



Lots 1 - 7 are not included in this offering.

## SASKA HILLS RESIDENTIAL PLANNED DEVELOPMENT PROJECT DATA SUMMARY

1. TRACT AREA: 85.3 ACRES TOTAL AREA PRD
2. EXISTING ZONING: RL - RESIDENTIAL LOW DENSITY
3. PROPOSED LAND USE: SINGLE FAMILY RESIDENTIAL PLANNED DEVELOPMENT
4. NUMBER OF LOTS : 199 LOTS WHEN FULLY DEVELOPED
5. COUNTY PARCEL NUMBERS: 252108340000, 252117210100, PORTION OF 25211723050, TO BE SEPARATED BY BLA
6. MINIMUM LOT SIZE (65% OF 8,400 SF) : 5,460 SF
7. ROADWAYS WITH CURB AND SIDEWALK TO ALL LOTS
8. OPEN SPACE AREAS: TOTAL 32.27 ACRES ( 38.2 % OF TOTAL TRACT)
9. SOURCE OF WATER SUPPLY: CITY OF ENTIAT
10. SOURCE OF SEWAGE DISPOSAL: CITY OF ENTIAT
11. EXISTING GROUND COVER: LEVEL AREAS WERE ABANDONED ORCHARDS, HILL SIDES ARE GRASSY W/ SOME CLUSTERS OF TREES

**RYKELS ENGINEERING GROUP, INC.**

Consulting Engineers - Civil, Municipal, Subdivisions, Land Development  
 28301 183rd Ave SE, Kent, WA 98042 Ph 253-631-6598 Fax 253-638-1982